

THE ALDE & ORE ASSOCIATION

Registered Charity No. 1064789



The Association exists to preserve for the Public benefit the Alde, Ore and Butley Creek rivers and their banks from Shingle Street to their tidal limits and such of the land adjoining them or upstream as may be considered to affect them, together with the features of beauty and or historic or public interest in that area.

ALDE AND ORE ESTUARY ASSESSORS REPORT

NAME: Alison Andrews	DATE OF INSPECTION 7 December 2013
LOCATION: Flood Cell 10	December Surge 5/6 December 2013
Area of Assessment Brick Dock to Martello TM 450565 to 463548 All map references from OS Explorer 212	Send to Amanda.bettinson@gmail.com

SUMMARY

River Wall /Armour	Saltings	High Tide Debris Line
<p>No breaches but in places bare earth on the front river face a) have developed such as near the Iona Saltings 463557 Or b) been made worse such as near Stanny Buoy (marked West Row Point on OS map), 444559</p> <p>Where there is no wall, Aldeburgh Yacht Club, water at its height was about 5 feet about the terrace level and surrounded the Club Building which is built on a mound.</p>	<p>no significant change in area but saltings appear very battered and flattened and parts near the river wall are smothered in debris</p>	<p>Overtopping for about 2 metres at 460556 at the low point reported in the spring. Small splashes of overtopping near Brick Dock</p> <p>Long stretches where debris runs along the top of wall along the path edge and in places along centre of path mainly 450566 to 449564</p> <p>Between 444560 and 450554(Fulcher Sluice) debris within 6 to 12 inches of the top of the bank</p> <p>At the Slaughden Road, debris washed from the saltings inlet into the Slaughden Road, 463556, and carpark by Slaughden Sailing Club</p>

RIVER WALL

General comment: No breaching of the walls but substantial part of the length of this flood cell saw the water very close to overtopping the walls.

Most significant overtopping on the lower sunken patch to the east of the major works , 20 yards long, 75 yards east from river walls steps, ref 460558, photo looking west NW



. In some places bare face has emerged or previously reported bare faces,(near Stanny, 445559) have been made worse



Bare earth on the river side near Brick Dock



Bare earth, newly emerged on front of all near Slaughden/Iona saltings
463556

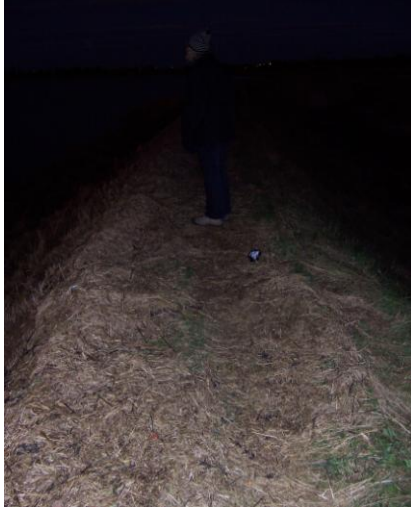
Bare earth at edge of path made last spring



Debris :long stretches lapping wall top, along Brick Dock stretch, this bit with seaweed



Debris centre of path, along Brick Dock stretch



Debris: close to top near Fulcher Sluice



Flattened saltings (typical of the whole stretch)



Shingle shift 600 metres south of Martello, ref 459539 approx ,begun last February has been viewed by Environment Agency but the carving out of the shingle beach is reported to be increased undoing at least some of the recharge last month.

Alison Andrews 8 December 2013